

LED EMERGENCY CONVERTER

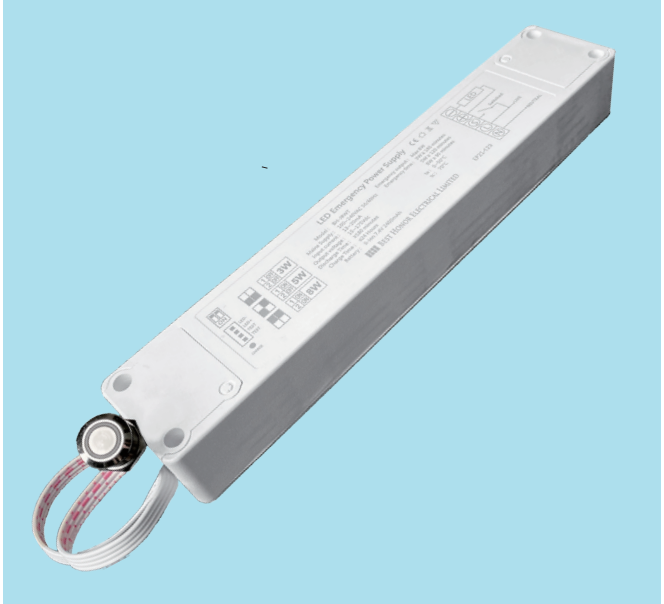


Technical data

Input rated voltage :	100-240V AC 50-60Hz
AC Input current :	13-20mA
Rated AC Input power :	2.5 W max
Power factor :	0.5
Charge time :	≤24 hours
Battery Charging :	(Li-ion) 7.4V 2400mAh
Battery Charging Current :	0-220mA
Output emergency power :	3-5-8 wattage DC15-175V Constant power output.
Emergency time :	3W ≥ 180minutes 5W ≥ 120minutes 8W ≥ 90minutes
Power indicator light :	Green
Charging indicator light :	Red
Ambient range :	ta 0...50°C
Max. casing temperature :	tc 70°C
Storage temperature :	-10...45°C
Protection :	IP30

BH-J8WT

LED Emergency converter



Relevant standard

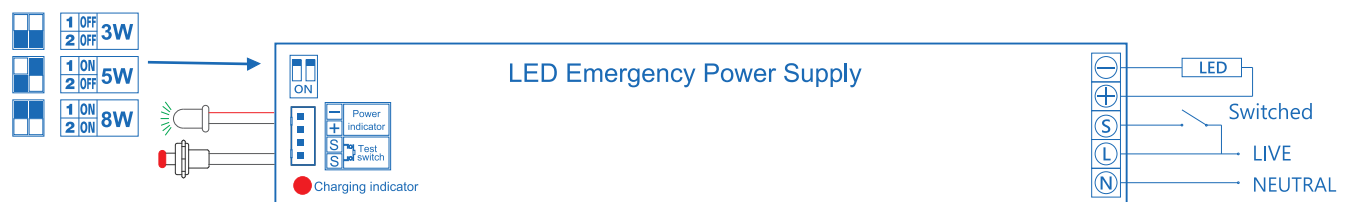
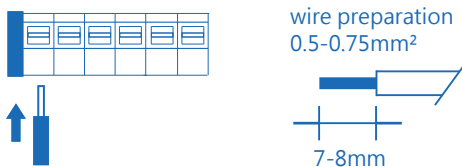
EN 61347-1:2015
EN 61347-2-7:2012
EN 55015:2019
EN 61547:2009
EN 61000-3-2

Product description

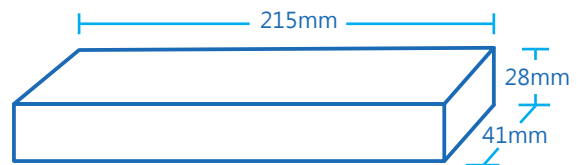
Non-maintained LED Emergency conversion kit

- LED emergency module suitable of direct installation in LED lamps
- Used with ternary Li-ion battery
- Accessory: test switch and charge indicator.

Wiring diagram (Non-maintained)



Dimensions (mm)



Warning : Live wire wall switch must be in same phase with charging live wire

